



SFT SUSHKA

Specimen / User manual

ABOUT

SFT Sushka is a narrow headline typeface that will look particularly good on the packaging of something delicious.

10 different widths and a variable font make it possible to fit the typeface into various **limited spaces**. Soft shapes and rounded notches make SFT Sushka cozy, friendly, and appetizing. But if you need a more concise and readable version, the Flat subfamily without notches is available for you.

The family forms a gradient from very narrow and quirky to wider, softer, and more fluffy styles. Therefore, the variation is not just in width and thickness, but in the overall mood as well.

You can use the **variable font without any concerns** about unexpected intersections in the letters! Its structure is no different from static fonts.

And last but not least, SFT Sushka allows for a **very tight line spacing** even in languages with diacritics!

INSTRUCTION → on pages 7-8

Features: Access all alternates (aalt), Glyph composition (ccmp), Localized forms (locl), Subscript (subs), Inferiors (sinf), Superscript (sup), Numerators (numr), Denominators (dnom), Fractions (frac), Ordinals (ordn), Proportional figures (pnum), Tabular figures (tnum), Slashed zero (zero), Contextual alternates (calt).

INSTRUCTION → on page 6

Stylistic sets: F alt. (ss01), Q alt. (ss02), I alt. no serif (ss03), S alt. (ss04), A alt. (ss05), Bashkir localization (ss12), Chuvash localization (ss13), Romanian comma accent (ss16), Dutch IJ (ss17), Catalan Ldot (ss18), Circled figures (ss19), Black circled figures (ss20).

First published: 05.2023.

Designer: Yulia Gonina.

Contributors:

Kirill Maslow (mastering),
Alena Linnask (graphic design).

Glyphs count: 993.

Styles count: 10 basic, 10 flat,
2 variable fonts.



INSTRUCTION on page 9

CHARACTER → SET ON PAGES 22-23

SFT Sushka contains 200+ Latin and 60+ Cyrillic languages. Moreover, we try to support every local language feature we know.

*If you have suggestions about adding local features and glyphs, please feel free to contact us at info@schrifteria.xyz.

languages

Latin: Abenaki, Afaan-Oromo, Afar, Afrikaans, Albanian, Alsatian, Amis, Anuta, Aragonese, Aranese-Aromanian, Arrernte, Arvanitic (Latin), Asturian, Atayal, Aymara, Azerbaijani, Bashkir-(Latin), Basque, Belarusian (Latin), Bemba, Bikol, Bislama, Bosnian, Breton, Cape-Verdean-Creole, Catalan, Cebuano, Chamorro, Chavacano, Chichewa, Chickasaw, Cimbrian, Cofán, Cornish, Corsican, Creek, Crimean Tatar (Latin), Croatian, Czech, Danish, Dawan, Delaware, Dholuo, Drehu, Dutch, English, Esperanto, Estonian, Faroese, Fijian, Filipino, Finnish, Folkspraak, French, Frisian, Friulian, Gagauz (Latin), Galician, Ganda, Genoese, German, Gikuyu, Gooniyandi, Greenlandic (Kalaallisut), Guadeloupean-Creole, Gwich'in, Haitian-Creole, Hän, Hawaiian, Hiligaynon, Hopi, Hotçak (Latin), Hungarian, Icelandic, Ido, Igbo, Ilocano, Indonesian, Interglossa, Interlingua, Irish, Istro-Romanian, Italian, Jamaican, Javanese-(Latin), Jèrriais, Kaingang, Kala-Lagaw-Ya, Kapampangan (Latin), Kaqchikel, Karakalpak-(Latin), Karelian (Latin), Kashubian, Kikongo, Kinyarwanda, Kiribati, Kirundi, Klingon, Kurdish-(Latin), Ladinlatinlatino-sine-Flexione, Latvian, Lithuanian, Lojban, Lombard, Low-Saxon, Luxembourgish, Maasai, Makhuwa, Malay, Maltese, Manx, Māori, Marquesan, Megleno-Romanian, Meriam-Mir, Mirandese, Mohawk, Moldovan, Montagnais, Montenegrin, Murrinh-Patha, Nagamese-Creole, Nahuatl, Ndebele, Neapolitan, Ngiyambaa, Niuean, Noongar, Norwegian, Novial, Occidental, Occitan, Onëipöt, Oshiwambo, Ossetian (Latin), Palauan, Papiamentu, Piedmontese, Polish, Portuguese, Potawatomi, Q'eqchi', Quechua, Rarotongan, Romanian, Romansh, Rotokas, Sami-(Inari-Sami), Sami (Lule-Sami), Sami (Northern-Sami), Sami (Southern-Sami), Samoan, Sango, Saramaccan, Sardinian, Scottish-Gaelic, Serbian-(Latin), Seri, Seychellois-Creole, Shawnee, Shona, Sicilian, Silesian, Slovak, Slovenian, Slovio-(Latin), Somali, Sorbian (Lower-Sorbian), Sorbian (Upper-Sorbian), Sotho (Northern), Sotho-(Southern), Spanish, Sranan, Sundanese (Latin), Swahili, Swazi, Swedish, Tagalog, Tahitian, Tetum, Tok-Pisin, Tokelauan, Tongan, Tshiluba, Tsonga, Tswana, Tumbuka, Turkish, Turkmen-(Latin), Tuvaluan, Tzotzil, Uzbek (Latin), Venetian, Vepsian, Volapük, Võro, Wallisian, Walloon, Waray-Waray, Warlpiri, Wayuu, Welsh, Wik-Mungkan, Wiradjuri, Wolof, Xavante, Xhosa, Yapese, Yindjibarndi, Zapotec, Zarma, Zazaki, Zulu, Zuni.

Cyrillic: Adyghe, Akhvakh, Aleut (Cyrillic), Altaic, Andi, Archi, Avar, Bashkir, Belarusian (Cyrillic), Besermyan, Bosnian (Cyrillic), Bulgarian (Cyrillic), Buryat, Chechen (Cyrillic), Chukchi, Chulym, Chuvash, Dargwa, Dungan, Enets, Even (Lamut), Gagauz, Godoberi, Ingush, Kabardino-Cherkess, Karaim, Karakalpak, Karata (Karata-Tukita), Karelian, Kazakh (Cyrillic), Ket, Kildin Sámi, Kirghiz, Komi-Zyrian, Koryak, Kumyk, Lak, Lezgian, Macedonian, Moldavian (Cyrillic), Mongolian, Mordvin-moksha, Nanai, Nganasan, Oroch, Ossetian, Russian, Rusyn, Saami, Serbian (Cyrillic), Soyot-Tsaatan, Tabasaran, Tadjik, Tatar Volgaic, Tindi, Touva, Tsez, Turkmen (Cyrillic), Udege, Udmurt, Uighur (Cyrillic), Ukrainian, Ulch, Uzbek (Cyrillic), Veps, Yukagir.

THIN THIN

EXTRALIGHT EXTRALIGHT

LIGHT LIGHT

REGULAR REGULAR

MEDIUM MEDIUM

DEMIBOLD DEMIBOLD

BOLD BOLD

EXTRABOLD EXTRABOLD

BLACK BLACK

EXTRABLACK EXTRABLACK

SFT Sushka SFT Sushka Flat

WIDTH Thin 80 pt

WIDTH ExtraLight 80 pt

WIDTH Light 80 pt

WIDTH Regular 80 pt

WIDTH Medium 80 pt

WIDTH DemiBold 80 pt

WIDTH Bold 80 pt

WIDTH ExtraBold 80 pt

WIDTH Black 80 pt

WIDTH ExtraBlack 80 pt

HEIGHT Thin 139 pt

HEIGHT ExtraLight 115 pt

HEIGHT Light 98 pt

HEIGHT Regular 86 pt

HEIGHT Medium 77 pt

HEIGHT DemiBold 70 pt

HEIGHT Bold 64,5 pt

HEIGHT ExtraBold 59,5 pt

HEIGHT Black 54,5 pt

HEIGHT ExtraBlack 51 pt

Height variation effect: Unfortunately, it's not technically possible to create a fully functional height axis. However, you can achieve a similar effect by adjusting the width and font size instead.

2.1 USE A FORK TO QUICKLY
SHAPE THE PASTRY.

Default set

②① USE A FORK TO QUICKLY
SHAPE THE PASTRY.

Stylistic sets: ss01 (F alt.), ss02 (Q alt.), ss03 (l alt. no serif), ss04 (S alt.), ss05 (A alt.),
ss19 (Circled figures), ss20 (Black circled figures).

OpenType Features

OT Feature	How to use	What it does
Glyph composition (ccmp)	It works when you type a letter and then a combining mark.	ǎ̂ = ǎ
Localized forms (locl) *duplicated in stylistic sets	It works when you choose a language for a text. If your graphic editor doesn't support a language you need, you can access this feature through the stylistic set.	<div>POȘTAL → POȘTAL <small>Romanian, Moldavian</small></div> <div>RIJK → RIJK <small>Dutch</small></div> <div>CEL·LA → CEL·LA <small>Catalan</small></div> <div>TÜRKIYE → TÜRKIYE <small>Turkish</small></div>
Subscript (subs)/ Superscript (sup), Numerators (numr), Denominators (dnom)	Turn on the OT feature with the appropriate name. It works with numbers and basic Latin letters (subscript and superscript)	<div>1s → 1_s</div> <div>1S → 1^S</div> <div>1 → 1₁</div> <div>1 → 1¹</div>
Ordinals (ordn)	Turn on the OT feature with the appropriate name. It works only for a, o and No.	<div>2a → 2^a</div> <div>10 → 1⁰</div> <div>no. → n^o</div>
Fractions (frac)	Write a sequence of numbers, slash, numbers, and apply the Fractions feature.	<div>3+ / +5 = 3/5</div> <div>1+ / +7 = 1/7</div> <div>54+ / +82 = 54/82</div>
Tabular figures (tnum)	Turn on the OT feature with the appropriate name. Works for numbers and currencies.	<div>0123 → 0123</div> <div>\$#% → \$#%</div>

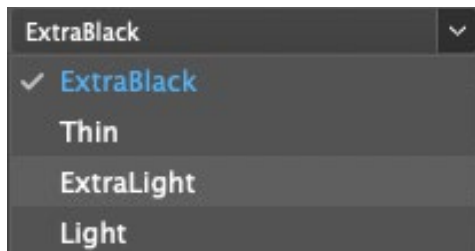
OpenType Features

OT Feature	How to use	What it does
Slashed zero (zero)	Turn on the OT feature with the appropriate name. Works for Proportional and Tabular zeros.	0 → 0
Contextual alternates (calt)	Contextual alternates are enabled by default. We suggest keeping it enabled. It automatically changes the letter shapes so that they don't intersect.	0:0 → 0:0 II → II

HOW TO USE

SFT Sushka Var is a variable version of SFT Sushka, as well as SFT Sushka Flat Var is a variable version of SFT Sushka Flat. They contain all styles in one font file. You can adjust **weight** in two ways:

1. Choosing a style name in a regular manner.



2. Using sliders to get intermediate values.



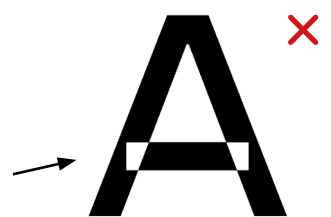
SUPPORT

To use variable fonts in web please consult following articles:
[Get started with variable fonts](#) by Richard Rutter;
[How to use variable fonts in the real world](#) by Richard Rutter.

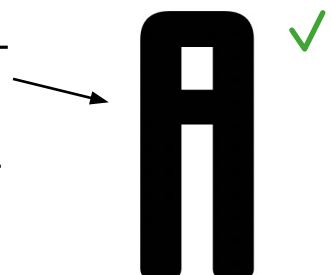
Check variable fonts support here <https://v-fonts.com/support>

ATTENTION!

Variable fonts are still a developing technology, so in most typefaces there may be issues with displaying and printing variable fonts (an example of such an issue is shown in the illustration).



However, in SFT Sushka, all letters and symbols are solid (they do not have any intersections), so such problems will not arise.



Nevertheless, it is still advisable to use variable fonts with proper caution.

Thin
90pt
Sets:
Default set

English

THE OLD FRENCH WORD BESCUIT IS
DERIVED FROM THE LATIN WORDS BIS
(TWICE) AND COQUERE, COCTUS (TO

ExtraLight
80pt
Sets:
I alt. no serif

Swedish

VISSA TYPER AV KEX ÄR AVSEDDA
SOM ETT ALTERNATIV TILL SMÖRGÅS
OCH ÄTS TILL EXEMPEL TILL SOPPA,

Light
71pt
Sets:
S alt.

Polish

WYRÓŻNIA SIĘ DWA TYPY HERBAT-
NIKÓW: LAMINOWANE I NIELAMINO-
WANE, KTÓRE DZIELĄ SIĘ NA DWA

Regular
63pt
Sets:
A alt.

Turkish

**PİŞİRME SİRASINDA KABARMAYI
ÖNLEMELİK İÇİN, SERT HAMURDAN
YAPILMIŞ BİSKÜVİLER GENELLİKLE
BİRÇOK KÜÇÜK DELİKLER BATIRI-**

Medium
56pt
Sets:
Q alt.

French

**DANS LE TOMBEAU DU PHARAON
ÉGYP TIEN TI, DE LA V^e DYNASTIE,
DES PEINTURES MONTRENT UN OU-
VRIER QUI ATTISE LE FEU D'UN**

DemiBold
50pt
Sets:
F alt.

Icelandic

**TIL ER MARGS KONAR KEK, EN VIÐ
SÆTT KEK ER ÖFT BÆTT ÁVÖXTUM,
KRYDDI EÐA SÚKKULAÐI. ÖFT ER
KEK HART EN NÝBAKAÐAR SMÁKÖ-
KUR GETA VERIÐ MÓÚKAR EÐA SEI-**

Bold
44pt
Sets:
Default set

Danish

**PÅ TUNESTENEN, EN RUNESTEN RE-
JST PÅ 300-TALLET I ØSTFOLD OG
FUNDET I 1627 I KIRKEGÅRDSMUREN
VED TUNE KIRKE, NU OPBEVARET PÅ**

ExtraBold
39pt
Sets:
I alt. no serif

Dutch

**KOEK IS EEN LEKKERNĠ, GEBAK-
KEN VAN DEEG, EIEREN, SUIKER EN
EVENTUELE ANDERE INGREDIËNTEN.
DE STRUCTUUR IS STEVIG, BRUIN VAN**

Black
35pt
Sets:
A alt.

German

**ER GEHÖRT ZU DEN DAUERBACKWAREN,
DIE MEIST AUS FETTHALTIGEM TEIG MIT
MEHR ODER MINDER SÜßEM GESCHMACK
BESTEHEN. GEFORMT WERDEN KEKSE**

ExtraBlack
31pt
Sets:
Default set

Spanish

**CALIENTE PROVIENE DE GALET, QUE SIG-
NIFICA LITERALMENTE "GUITARRO" Y ES
EL DIMINUTIVO DE GAL [PIEDRA]. GAL ES
UNA PALABRA QUE PROVIENE DE LAS LEN-
GUAS INDOEUROPEAS, CONCRETAMENTE**

Thin
90pt
Sets:
Default set

Russian

ЕСТЬ НЕСКОЛЬКО СПОСОБОВ ПРИГОТОВ-
ЛЕНИЯ БИСКВИТНОГО ТЕСТА. УДОБНЕЙ-
ШИЙ ИЗ НИХ ДЛЯ ДОМАШНЕГО ПРИГО-

ExtraLight
80pt
Sets:
A alt.

Bulgarian

ТЕСТОТО НАБУКВА ЕДИНСТВЕНО ОТ
ВЪЗДУШНИТЕ МЕХУРИ, КОИТО СЕ
ОБРАЗУВАТ ПРИ РАЗБИВАНЕТО НА

Light
71pt
Sets:
Default set

Serbian

ОД ДЕВЕТОГ ВЕКА, У ВЕЋИМ ЕВ-
РОПСКИМ ГРАДОВИМА ПОЈАВЉУЈУ
СЕ ПЕКАРСКИ ЕФИНАФИ; КВАЛИТЕТ,

Regular
63pt
Sets:
I alt. no serif

Ukrainian

ЖОВТКИ РОЗТИРАЮТЬ З ЦУКРОМ
ДО ЗБІЛЬШЕННЯ ЇХНЬОГО ОБ'ЄМУ
ВТРИЧІ. ЯКЩО ЗАНАДТО ДОВГО
РОЗТИРАТИ ЖОВТКИ, ТО З НИХ ВИ-

Medium
56pt
Sets:
Default set

Tatar

ИКМАККА КОНЛЕК ИКТЪЯЖ
КЕШЕНЕН! КОНГА КУПМЕ ЭНЕРГИЯ
САРЬФ ИТЧЕНА БАЙЛЕ. ИКМАКНЕ
АЕРЫМ АШАП БУЛА, ШУЛАЙ

DemiBold
50pt
Sets:
Default set

Belorussian

У АНГЛАМОЎНЫХ КРАІНАХ ТЭР-
МІН «БІСКВІТ» УЖЬВАЕЦЦА ДЛЯ
ІНШЫХ ПРАДУКТАЎ. НАЙБОЛЬШ
ЗРУЧНЫ ДЛЯ КАТНЯГА ПРЫГАТАВАН-
НЯ СПОСАБ: ЯЎКІ ЎЗБІВАЮЦЬ З ЦУ-

Bold
44pt
Sets:
Default set

Mongolian

ЭРТНИЙ ХҮМҮҮС БУУДАЙГ ҮР ТАРИА
ЦИГЭЭР НЬ ХҮНСЭНДЭЭ ХЭРЭГЛЭДЭГ
БАЙСАН БӨГӨӨД УЛМААР ЧУЛУУН
ДЭЭР ТАВЬЖ, ЧУЛУУГААР НҮДЭН

ExtraBold
39pt
Sets:
Default set

Kazakh

ҚАЗІРГІ УАҚЫТТА ЕРТЕРЕКТЕГІ
НАННЫҢ ЖАЛҒАСЫН БҮКІЛ ӘЛЕМДЕ
ӘР АЛУАН ЖАРМАДАН ДАЯРЛАЙДЫ,
МЫСАЛЫ, МЕКСИКАЛЫҚ ТОРТИЛЬЯ,

Black
35pt
Sets:
Default set

Kyrgyz

КАМЫРЗЫ БЕШЕРЕЧ ЮЛЫ МЕНЕН
АЛЫНҒАН ИКМӨК ПРОДУКТЫ (КӨМ
ТИГЕНДЕ ОН ҲӘМ ҲЫУЗАН ТОРА),
СҮПРӨ ЙӘКИ ӘСЕТКЕ КУЛЛАНЫЛЫП

ExtraBlack
31pt
Sets:
Default set

Rusyn

СВІЖЬЇ ХЛІБ СЯ ОЦІНЮЄ ПРО СВІЇ
СМАК І ФАРБУ. УТРИМАНЯ СВІЖОСТИ Є
ДУЖЕ ВАЖНЕ, ЖЕБЬ СЯ ВСОКОТИВ ХЛІБ
СМАЧНЫМ. СУЧАСНЬЇ ХЛІБ ОБГОРТАЮТЬ
ПАПІРЄВОВ, ЧІ ПЛАСТОВОВ ОБГОРТКОВ

Thin
90pt
Sets:
Default set

English

THE OLD FRENCH WORD BISCUIT IS
DERIVED FROM THE LATIN WORDS BIS
(TWICE) AND COQUERE, COCTUS (TO

ExtraLight
80pt
Sets:
I alt. no serif

Swedish

VISSA TYPER AV KEX ÄR AVSEDDA
SOM ETT ALTERNATIV TILL SMÖRGÅS
OCH ÄTS TILL EXEMPEL TILL SOPPA,

Light
71pt
Sets:
S alt.

Polish

WYRÓŻNIA SIĘ DWA TYPY HERBAT-
NIKÓW: LAMINOWANE I NIELAMINO-
WANE, KTÓRE DZIELĄ SIĘ NA DWA

Regular
63pt
Sets:
A alt.

Turkish

**PİŞİRME SIRASINDA KABARMAYI
ÖNLEMELİK İÇİN, SERT HAMURDAN
YAPILMIŞ BİSKÜVİLER GENELLİKLE
BİRÇOK KÜÇÜK DELİKLER BATIRI-**

Medium
56pt
Sets:
Q alt.

French

**DANS LE TOMBEAU DU PHARAON
ÉGYP TIEN TI, DE LA V^e DYNASTIE,
DES PEINTURES MONTRENT UN OU-
VRIER QUI ATTISE LE FEU D'UN**

DemiBold
50pt
Sets:
F alt.

Icelandic

**TIL ER MARGS KONAR KEK, EN VIÐ
SÆTT KEK ER OPT BÆTT ÁVÖXTUM,
KRYDDI EÐA SÚKKULAÐI. OPT ER
KEK HART EN NÝBAKAÐAR SMÁKÖ-
KUR GETA VERIÐ MJÚKAR EÐA SEI-**

Bold
44pt
Sets:
Default set

Danish

**På tunestenen, en runesten re-
jst på 300-tallet i Østfold og
fundet i 1627 i kirkegårds-muren
ved Tune kirke, nu opbevaret på**

ExtraBold
39pt
Sets:
I alt. no serif

Dutch

**Koek is een lekkernij, gebak-
ken van deeg, eieren, suiker en
eventuele andere ingrediënten.
De structuur is stevig, bruin van**

Black
35pt
Sets:
A alt.

German

**er gehört zu den Dauerbackwaren,
die meist aus fetthaltigem Teig mit
mehr oder minder süßem Geschmack
bestehen. Geformt werden Kekse**

ExtraBlack
31pt
Sets:
Default set

Spanish

**caliente proviene de gallet, que sig-
nifica literalmente "guitarro" y es
el diminutivo de gal [piedra]. Gal es
una palabra que proviene de las len-
guas indoeuropeas, concretamente**

Thin
90pt
Sets:
Default set

Russian

ЕСТЬ НЕСКОЛЬКО СПОСОБОВ ПРИГОТОВ-
ЛЕНИЯ БИСКВИТНОГО ТЕСТА. УДОБНЕЙ-
ШИЙ ИЗ НИХ ДЛЯ ДОМАШНЕГО ПРИГО-

ExtraLight
80pt
Sets:
A alt.

Bulgarian

ТЕСТОТО НАБУХВА ЕДИНСТВЕНО ОТ
ВЪЗДУШНИТЕ МЕХУРИ, КОИТО СЕ
ОБРАЗУВАТ ПРИ РАЗБИВАНЕТО НА

Light
71pt
Sets:
Default set

Serbian

ОД ДЕВЕТОГ ВЕКА, У ВЕЋИМ ЕВ-
РОПСКИМ ГРАДОВИМА ПОЈАВЉУЈУ
СЕ ПЕКАРСКИ ЕСНАФИ; КВАЛИТЕТ,

Regular
63pt
Sets:
I alt. no serif

Ukrainian

ЖОВТКИ РОЗТИРАЮТЬ З ЦУКРОМ
ДО ЗБІЛЬШЕННЯ ЇХНЬОГО ОБ'ЄМУ
ВТРИЧІ. ЯКЩО ЗАНАДТО ДОВГО
РОЗТИРАТИ ЖОВТКИ, ТО З НИХ ВИ-

Medium
56pt
Sets:
Default set

Tatar

ИКМАККА КӨНЛЕК ИХТЯЖ
КЕШЕНЕН! КӨНГӘ КҮПМЕ ЭНЕРГИЯ
САРЬФ ИТЧЕНӘ БАЙЛЕ. ИКМАКНЕ
АЕРЫМ АШАП БУЛА, ШУЛАЙ

DemiBold
50pt
Sets:
Default set

Belorussian

У АНГЛАМОЎНЫХ КРАІНАХ ТЭР-
МІН «БІСКВІТ» УЖЬВАЕЦЦА ДЛЯ
ІНШЫХ ПРАДУКТАЎ. НАЙБОЛЬШ
ЗРУЧНЫ ДЛЯ КАТНЯГА ПРЫГАТАВАН-
НЯ СПОСАБ: ЯЇКІ ЎЗБІВАЮЦЬ З ЦУ-

Bold
44pt
Sets:
Default set

Mongolian

ЭРТНИЙ ХҮМҮҮС БУУДАЙГ ҮР ТАРИА
ЧИГЭЭР НЬ ХҮНСЭНДЭЭ ХЭРЭГЛЭДЭГ
БАЙСАН БӨГӨӨД УЛМААР ЧУЛУУН
ДЭЭР ТАВЬЖ, ЧУЛУУГААР НҮДЭН

ExtraBold
39pt
Sets:
Default set

Kazakh

ҚАЗІРГІ УАҚЫТТА ЕРТЕРЕКТЕГІ
НАННЫҢ ЖАЛҒАСЫН БҮКІЛ ӘЛЕМДЕ
ӘР АЛУАН ЖАРМАДАН ДАЯРЛАЙДЫ,
МЫСАЛЫ, МЕКСИКАЛЫҚ ТОРТИЛЬЯ,

Black
35pt
Sets:
Default set

Kyrgyz

КАМЫРЗЫ БЕШЕРЕЧ ЮЛЬ МЕНЭН
АЛЫНҒАН ИКМӘК ПРОДУКТЫ (КӘМ
ТИГӘНДӨ ОН ҺӘМ ҺЫУЗАН ТОРА),
СҮПРӘ ЙӘКИ ӘСЕТКЕ КУЛЛАНЬЛЫП

ExtraBlack
31pt
Sets:
Default set

Rusyn

СВІЖЬЇ ХЛІБ СЯ ОЦІНЮЄ ПРО СВІЇ
СМАК І ФАРБУ. УТРИМАНЯ СВІЖОСТИ Є
ДУЖЕ ВАЖНЕ, ЖЕБЬ СЯ ВСОКОТИВ ХЛІБ
СМАЧНЫМ. СУЧАСНЬЇ ХЛІБ ОБГОРТАЮТЬ
ПАПІРЄВОВ, ЧІ ПЛАСТОВОВ ОБГОРТКОВ

Character Set

Glyphs

[illegible]

Character Set

Glyphs

ss04 (S alt.)

Š Š Š Š Š Š Š Š Š

ss05 (A alt.)

À Á Â Ã Ä Å Æ Ç È É Ê Ë Ì Í Î Ï Ñ Ò Ó Ô Õ Ö × Ø Ù Ú Û Ü Ý Þ ß à á â ã

Graphics

● ○ ■ □ ▲ ► ▼ ◀ ▶ ▽ ▹ ◉ ◊ ◻ ◆ ◇ ▲ ► ▼ ◀ ▶ ▽ ▹
ft schrifteria

About foundry

Schrifteria is a type foundry started by Yulia Gonina in 2022. We offer retail and custom typeface design, Cyrillic design, and type-related consulting services including logo design reviews and brand typography advice.

Schrifteria was created with the goal of using design experience and feedback from client projects, customer research, and personal experience to create functional typefaces.

We prioritize user experience in our design rather than design for its own sake.

Contact us

schrifteria.xyz
info@schrifteria.xyz

Copyright © Schrifteria Foundry 2022-2023.

All rights reserved.

For more information about fonts and services please visit our website.